

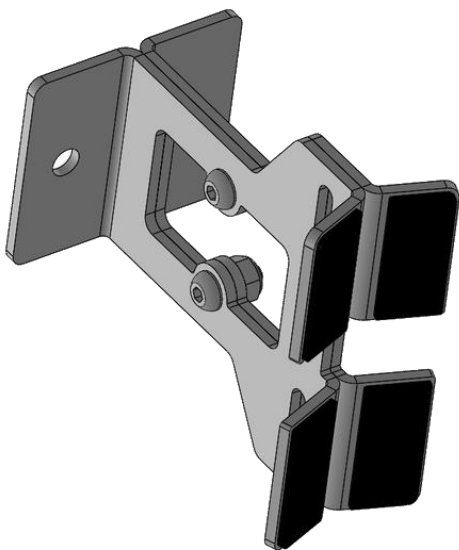
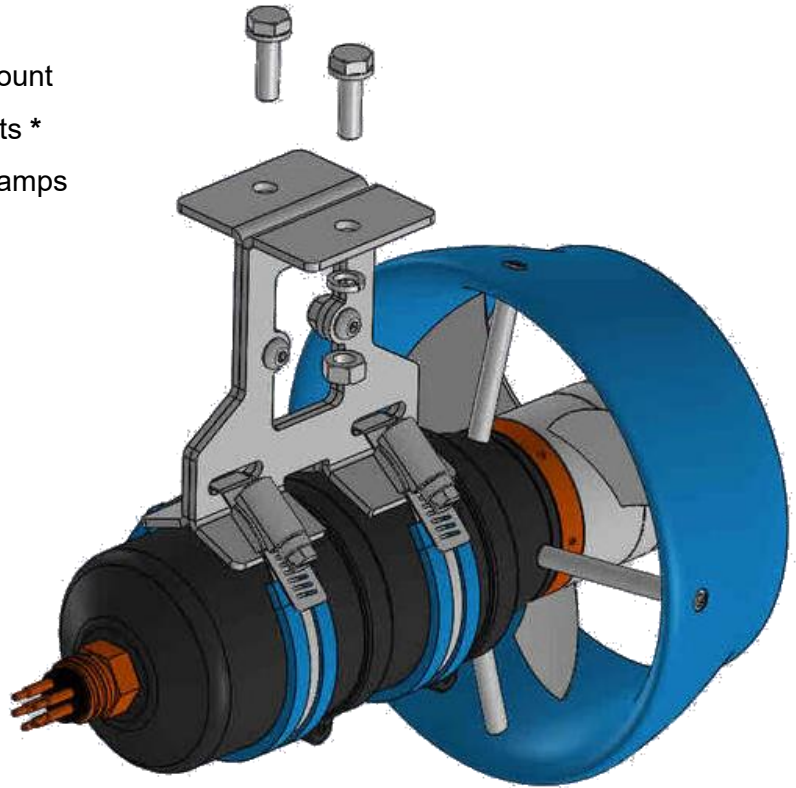
## T Mount . . . *Tougher & Smarter*

### All Stainless Steel 316

- Sturdy and corrosive resistant metal mount
- Attach by off-the-shelf two 1/4" Hex Nuts \*
- Two slots for 9/16" worm gear Hose Clamps
- Four neoprene Pads set between T Mount and Thruster
- Weight .63 lb.

### Substantial Cost Savings

The cost incurred to craft a part by CNC machine milling process is near 2.5X more versus crafting the same functional part by use of CNC laser cutout and a bending process.



### Options

- Three lengths available. Shown above is 3.25".  
Other lengths—1.50" and 4.0". Measured to inside top and lower legs at bend lines.
- The cost of a conventional stainless steel 316 1/4" hex nut is about 1% of the cost to make a custom threaded hole *dowel nut* made of the same material.